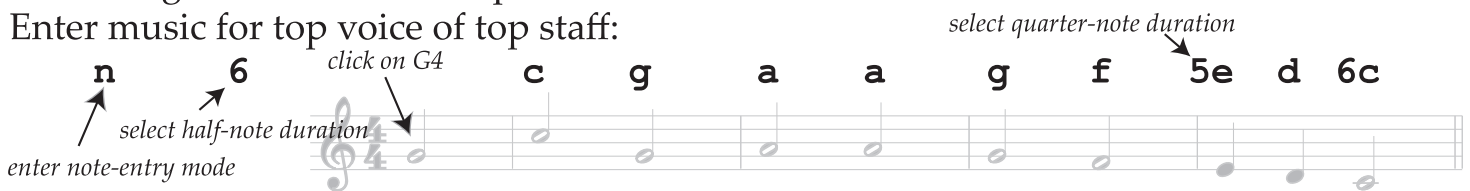


1. Create new score with **ctrl-n** (⌘-n) • “Create new score from template” • Piano.mscx  
• Time signature 4/4 • Pickup measure 2/4 • 5 measures.

2. Enter music for top voice of top staff:



3. Add fermata to current note:

- Open palette “Articulations, Ornaments” (press F9 if palettes are not visible).
- Double-click on fermata in articulation palette to apply to current note.

4. Enter music for bottom voice on top staff:

- Click on green “2” button to switch to second voice.
- Click on E4 for first note, then type:



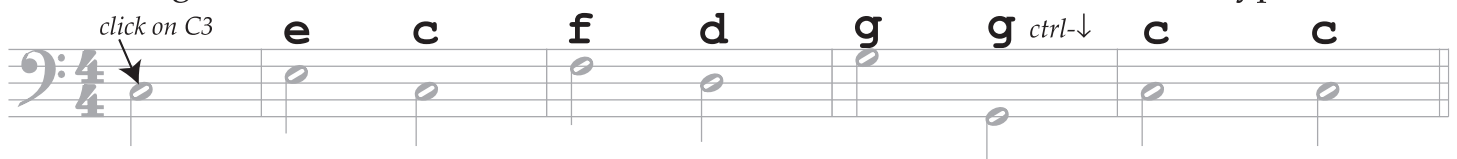
5. Enter music for top voice of bottom staff:

- Click on blue “1” for first layer • Click on G3 at start of music, then type:



6. Enter music for bottom voice of bottom staff:

- Click on green “2” for second voice • Click on C3 at start of music, then type:



7. Add fermata to current note: double-click on inverted fermata in articulation palette.

8. Add slurs:

- Press **esc** to exit note-entry mode.
- Click on first note of each slur and type “s”.

9. Change style of final barline:

- Click on final barline.
- Open “Bar Lines” palette.
- Double-click on double thin barline style.